



DOME LIGHT

85mm / 3.35" Series



GENERAL:

The DL85 can be ordered with 1 or 2 different channels/colors of LED's, a single color (i.e. white) or two color (i.e. white and infrared). Its small and lightweight design makes it robot-friendly.

ELECTRICAL:

Input Voltage (per CH): See _LDM700 spec
Input Current (per CH): See _LDM700 spec

ENVIRONMENTAL:

Operating Temperature: 0 to 50°C
Relative Humidity: 5 to 85% non-condensing

MECHANICAL:

Lighted Area: 3.35" / 85mm
Connector: M12 Quick Connect, 5 pin
Weight: 0.72 lbs (0.33kg)

ILLUMINATION:

Light Source: LED – Colors, UV & IR
Quantity HB LED's: 12 or 6 per channel
Light Emitting Pattern: 7.09" / 180mm
LED Life: up to 100,000 hours*.
*Contact us for LED life information

PART NUMBER DESIGNATION:

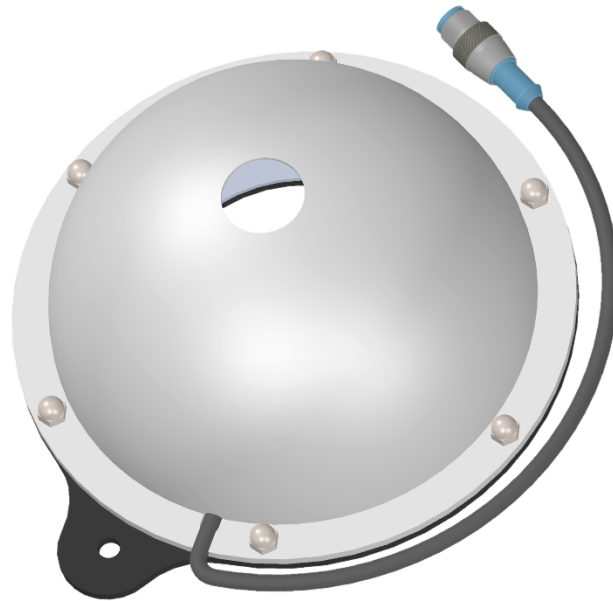
DL85-XXX or DL85-XXX/YYY for dual channel
XXX = Single or Ch 1 Color – see table dash # below
YYY = Ch 2 Color – see table dash # below

Order part number examples:

1 channel: DL85-470

2 channel: DL85-850/WHI (850nmIR and White) or DL85-630/NWH (Red and Natural White)

WARNING !!!
Use Only Spectrum Illumination LDM Driver
with Monster Lights. Do Not Connect
Monster Lights Directly to 24VDC!



Color	Dash #
Ultra Violet	-365
Ultra Violet	-395
Royal Blue	-450
Blue	-470
Cyan	-505
Green	-530
Amber	-590
Red	-630
Photo Red	-660
Far Red	-730
Infrared	-850
Infrared	-940
Pure White	-W
Natural White	-NW
Warm White	-WW

For additional LED information, please visit:
spectrumillumination.com
Select "RESOURCES" and under LED
Information select "Monster LED
Specifications and Photometrics"

Direct link below:

<https://spectrumillumination.com/wp-content/uploads/Monster-LED-Info.pdf>



Light includes LDM DIN rail mount
constant current driver(s) and 4-meter
cable (driver(s) is available with variable
or 0-10VDC intensity control - cable also
available in 8, 15 and 30 meter lengths)

Spectrum Illumination • 5114 Industrial Park Rd. • Montague, MI 49437

Phone 231-894-4590 • Fax 231-894-4582

www.spectrumillumination.com

Rev. Date: 2021-06-04

WIRING:

Single Channel:

Channel	LED Color	Wire Color	_LDM Green Connector
1	As Ordered	Brown	Pin 1
		Blue	Pin 2

For 2nd channel - please disregard wire color specified on _LDM700 driver and wire as indicated below:

2 Channel (Qty 2 _LDM700's required):

Channel	LED Color	Wire Color	_LDM Green Connector
1	As Ordered	Brown	Pin 1
		Blue	Pin 2
2	As Ordered	Black	Pin 1
		Green or Grey	Pin 2

