

MECHANICAL:

20mm optic
 Lens Quality Polycarbonate
 High thermal stability









OPTICAL:

Part No	Lense Option	Description	FWHM#	EFF
ML-12	/12	Plain tight beam optic	12.8°	86.2%
ML-30	/30	Ripple medium beam optic	25.7°	83.7%
ML-50	/50	Ripple medium beam optic	38.8°	79.1%
ML-L	/L	Line Optic	44.1° x 15.3°	82.5%
ML-F	/F	Wide Angle Optic	~70°	n/a
MLF-16	/16	Frosted tight beam optic	16.4°	85.3%
MLF-23	/23	Frosted medium beam optic	22.4°	81.5%
MLF-39	/39	Frosted wide beam optic	38.5°	78.3%
ML-R	/R	90° Reflector	81°	87.9%
ML-R60	/R60	60° Reflector	52.3°	78.3%

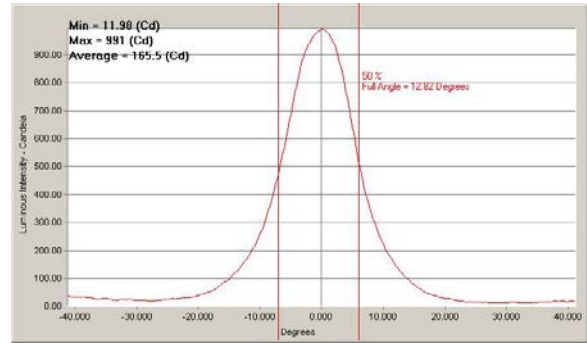
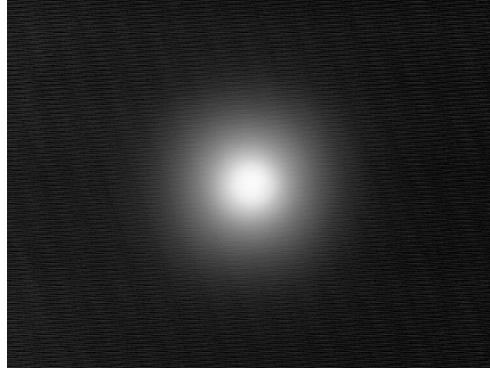
#Full Width Half Maximum i.e. total viewing angle, White LED measured

PART NUMBER DESIGNATION:

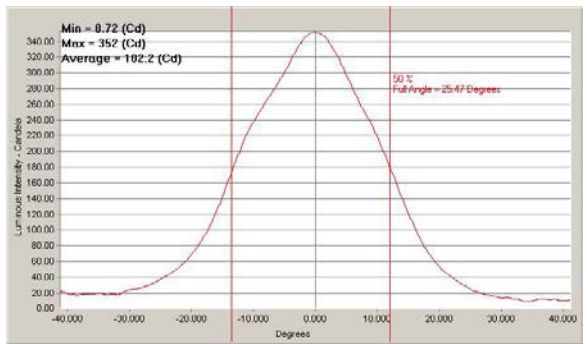
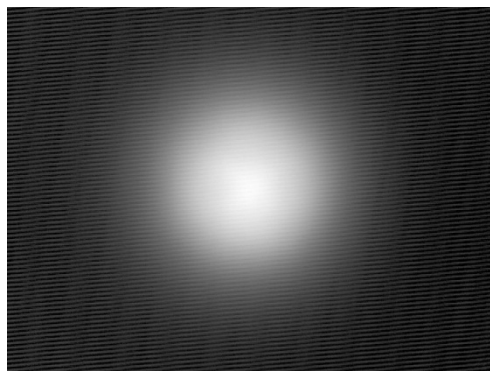
ML-XX to order as separate item
 XXXXX-YYY/ZZ to order with the light
 XXXXX = Light Part Number
 YYY = Light Color
 /ZZ specifies lense option
 Example: ML-50 - Purchase 50 degree lense
 MLL11.5-WHI/50 - Linear Light, 11.5", White with 50 degree lenses

<p><i>12° Optic</i> <i>ML-12 /12</i> <i>(Standard)</i></p>		<p><i>16° Frosted Optic</i> <i>MLF-16 /16</i> <i>(E series Standard)</i></p>	
<p><i>30° / 50° Optic</i> <i>ML-30 /30</i> <i>ML-50 /50</i></p>		<p><i>23° Frosted Optic</i> <i>MLF-23 /23</i></p>	
<p><i>Line Optic</i> <i>ML-L /L</i></p>		<p><i>39° Frosted Optic</i> <i>MLF-39 /39</i></p>	
<p><i>F Optic</i> <i>ML-F /F</i></p>		<p><i>90° & 60° Reflector</i> <i>ML-R /R</i> <i>ML-R60 /R60</i></p>	

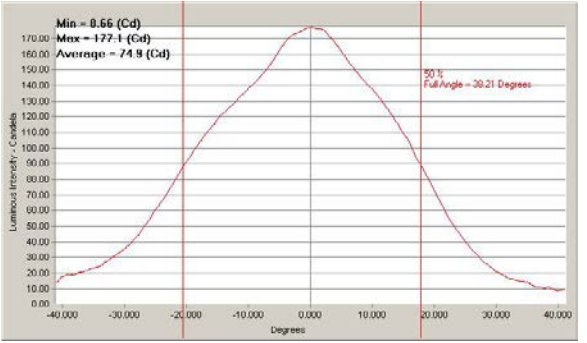
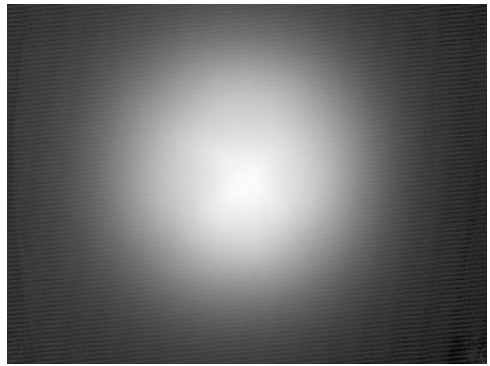
ML-12 (/12)



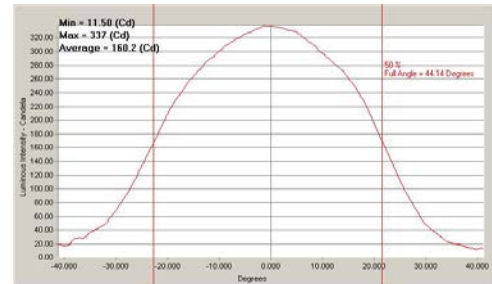
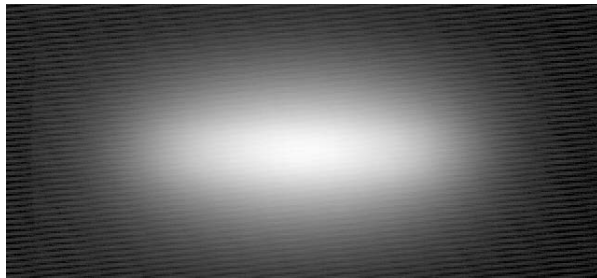
ML-30 (/30)



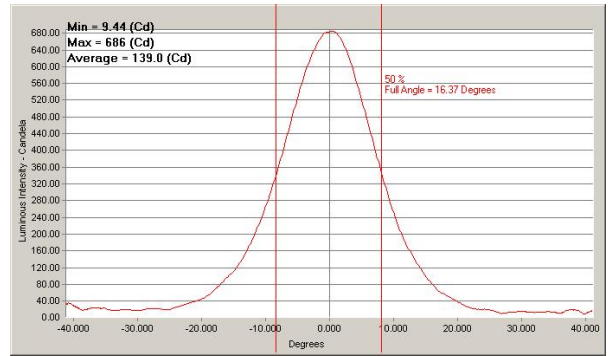
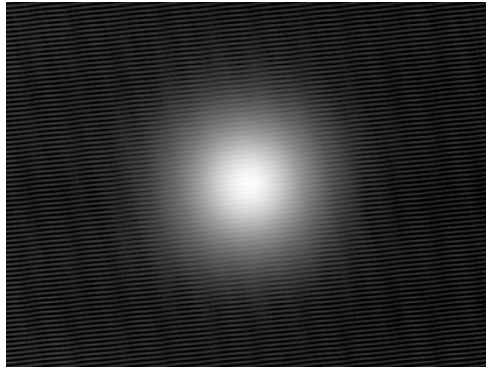
ML-50 (/50)



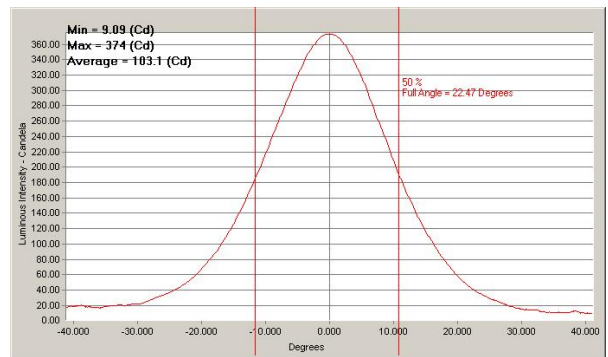
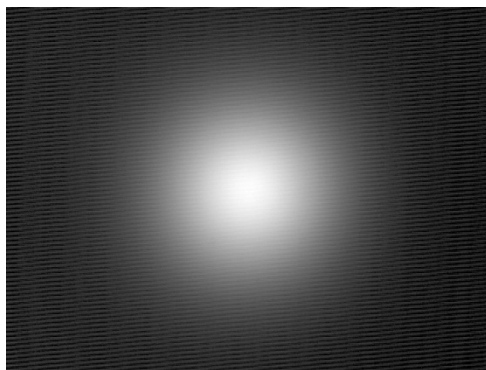
ML-L (/L)



MLF-16 (/16)



MLF-23 (/23)



MLF-39 (/39)

