

Monster Series Lens Specification Sheet



MECHANICAL:

20mm optic
Lens Quality Polycarbonate
High thermal stability

OPTICAL:

Part No	Lense Option	Description	FWHM#	EFF
ML-12	/12	Plain tight beam optic	12.8°	86.2%
ML-30	/30	Ripple medium beam optic	25.7°	83.7%
ML-50	/50	Ripple medium beam optic	38.8°	79.1%
ML-L	/L	Line Optic	44.1° x 15.3°	82.5%
ML-F	/F	Wide Angle Optic	~70°	n/a
MLF-16	/16	Frosted tight beam optic	16.4°	85.3%
MLF-23	/23	Frosted medium beam optic	22.4°	81.5%
MLF-39	/39	Frosted wide beam optic	38.5°	78.3%

#Full Width Half Maximum i.e. total viewing angle
White LED measured

PART NUMBER DESIGNATION:

ML-XX to order as separate item

XXXXX-YYY/ZZ to order with the light

XXXXX = Light Part Number

YYY = Light Color

/ZZ specifies lense option

Example: ML-50 - Purchase 50 degree lense

MLL111.5-WHI/50 - Linear Light, 11.5", White with 50 degree lenses

12° Optic
ML-12 /12
(Standard)



16° Frosted Optic
MLF-16 /16
(E series Standard)



30° / 50° Optic
ML-30 /30
ML-50 /50



23° Frosted Optic
MLF-23 /23



Line Optic
ML-L /L



39° Frosted Optic
MLF-39 /39



F Optic
ML-F /F



Spectrum Illumination • 5114 Industrial Park Rd. • Montague, MI 49437

Phone 231-894-4590 • Fax 231-894-4582

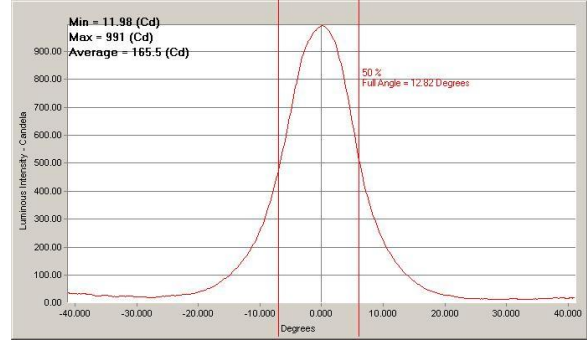
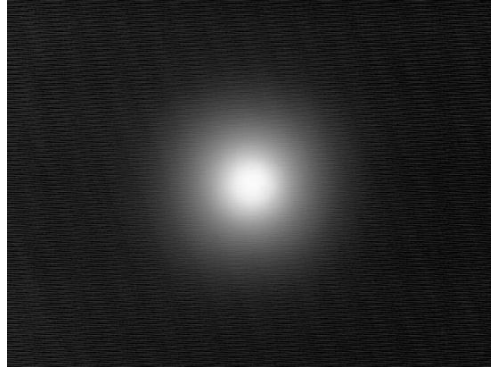
www.spectrumillumination.com

Rev. Date: 2012-04-11

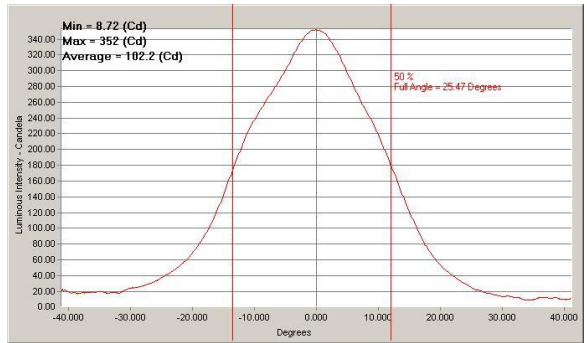
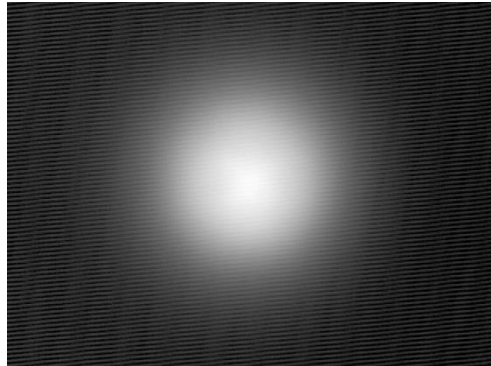
Monster Series Lense Specification Sheet



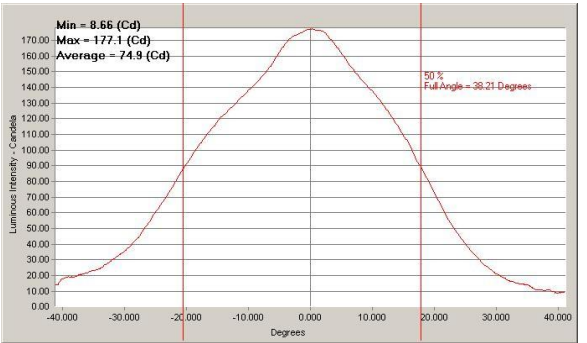
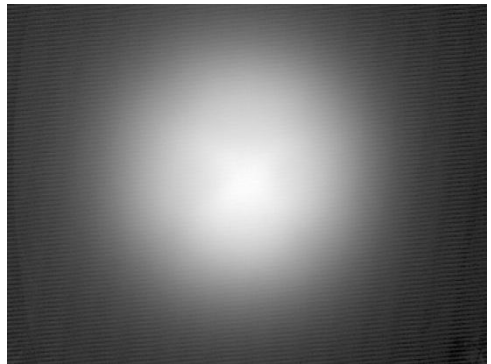
ML-12 (/12)



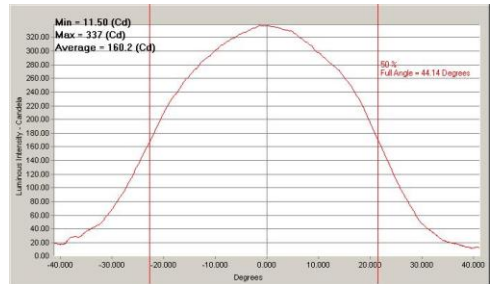
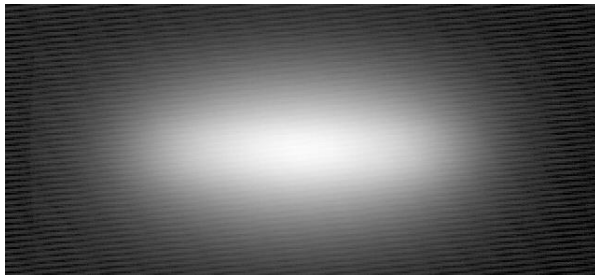
ML-30 (/30)



ML-50 (/50)



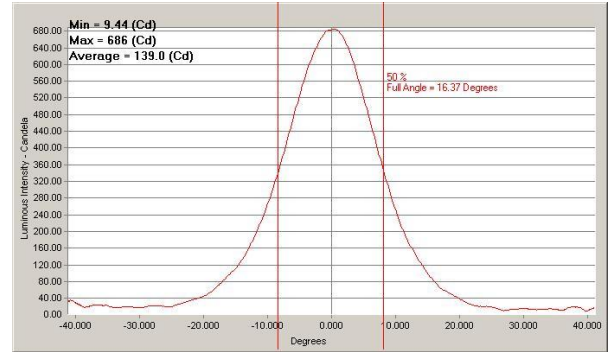
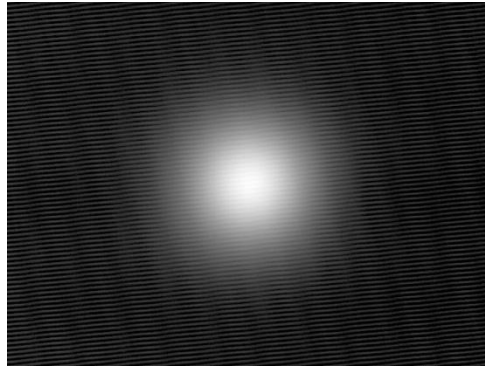
ML-L (/L)



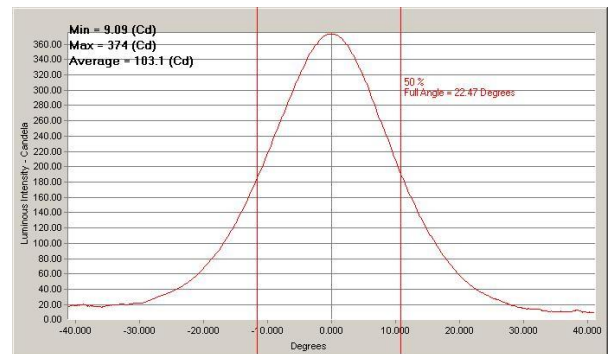
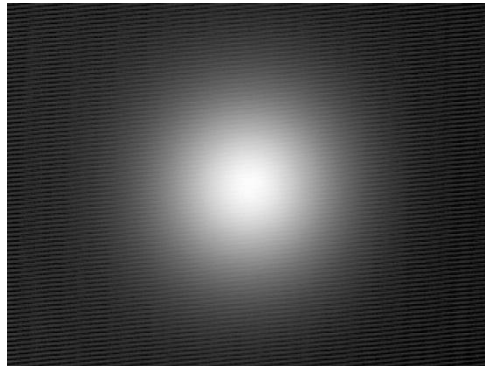
Monster Series Lense Specification Sheet



MLF-16 (/16)



MLF-23 (/23)



MLF-39 (/39)

